

CONFIG NANO STATION M2 P2P & PICO STATION M2HP AS AP

Note :

Topology (AP WDS ---- DISTANCE ---- STATION WDS & AP)

Internet Gateway ip 192.168.11.1/248

NanoStation M2(1) as AccessPoint WDS ip 192.168.11.2/248

NanoStation M2(2) as Station WDS ip 192.168.11.3/248

PicoStation M2HP as AccessPoint LAN ip 192.168.11.4/248

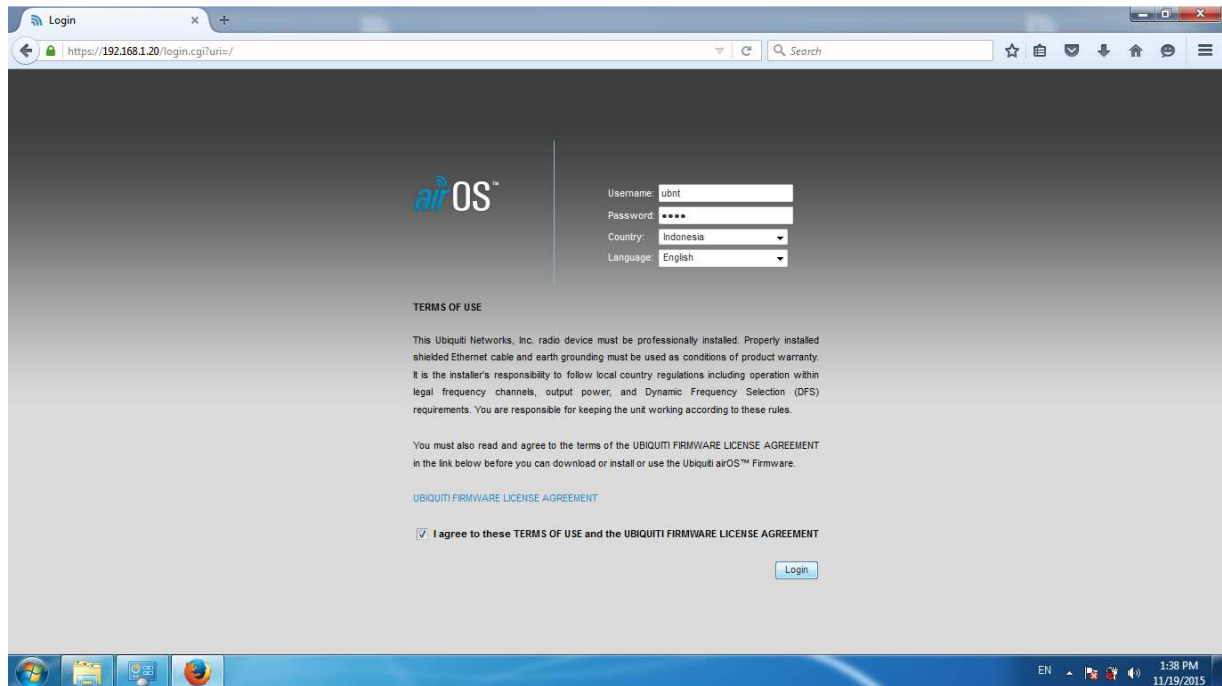
WLAN ip 192.168.100.1/24

Client DHCP ip 192.168.100.0/24

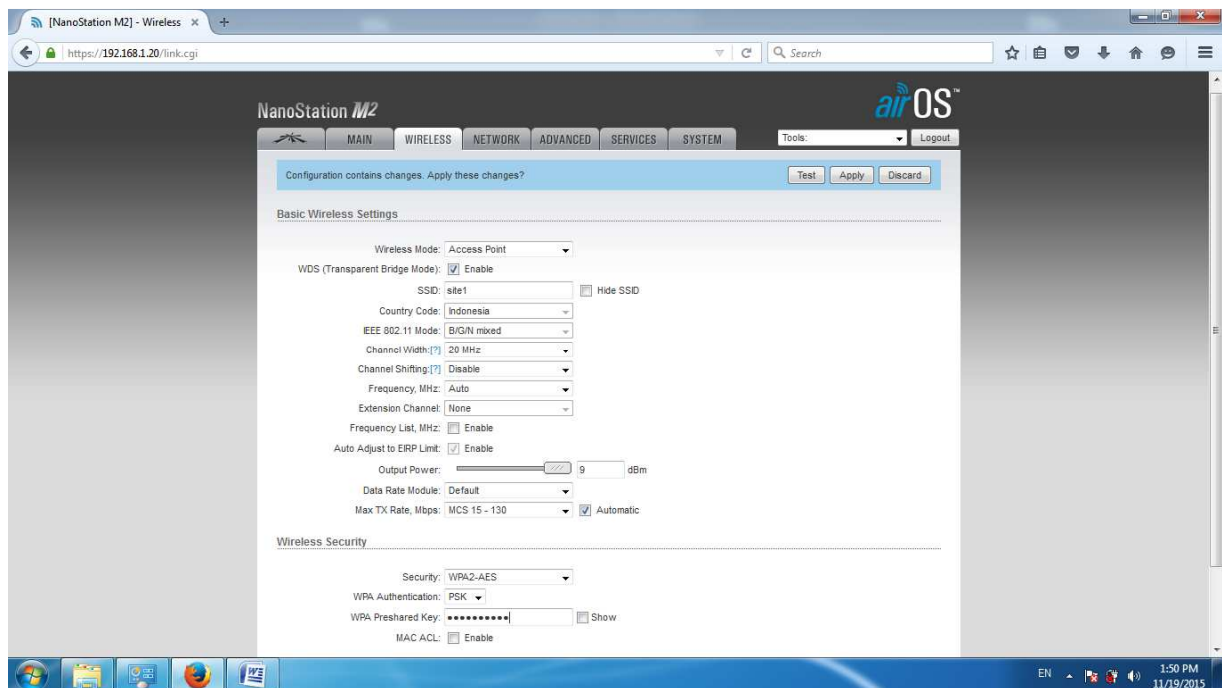


NanoStation M2 (1) as AP WDS

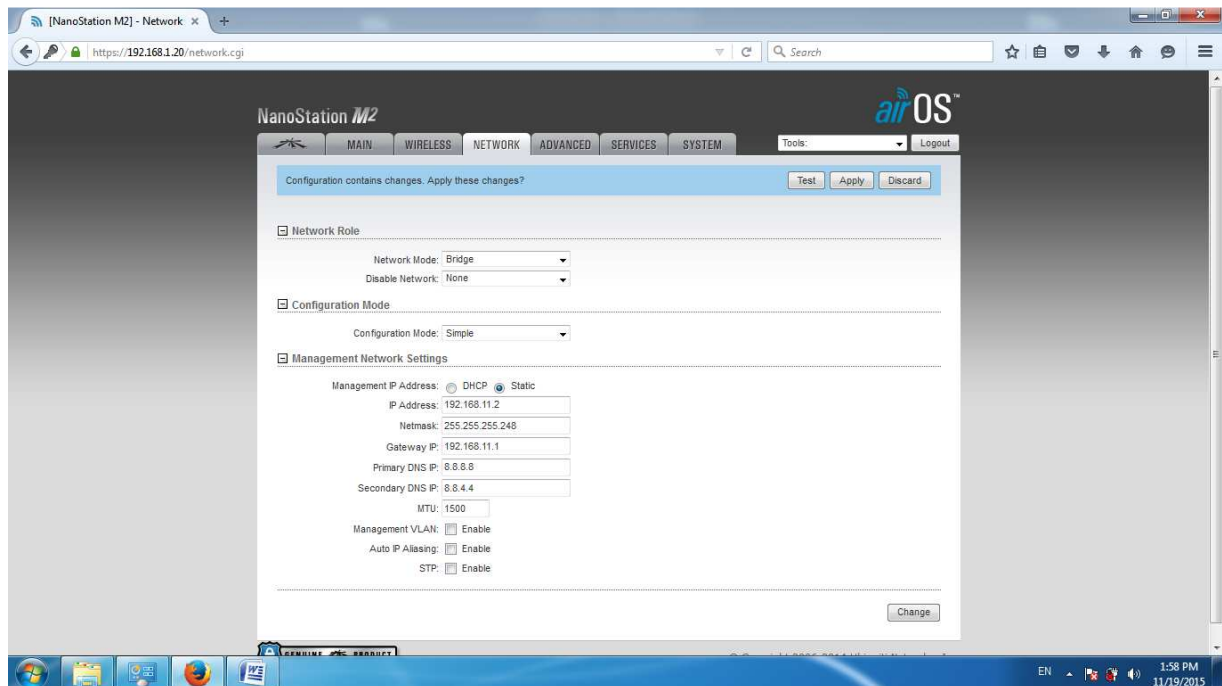
1. Default ip NS M2 192.168.1.20 with user & passwd ubnt.



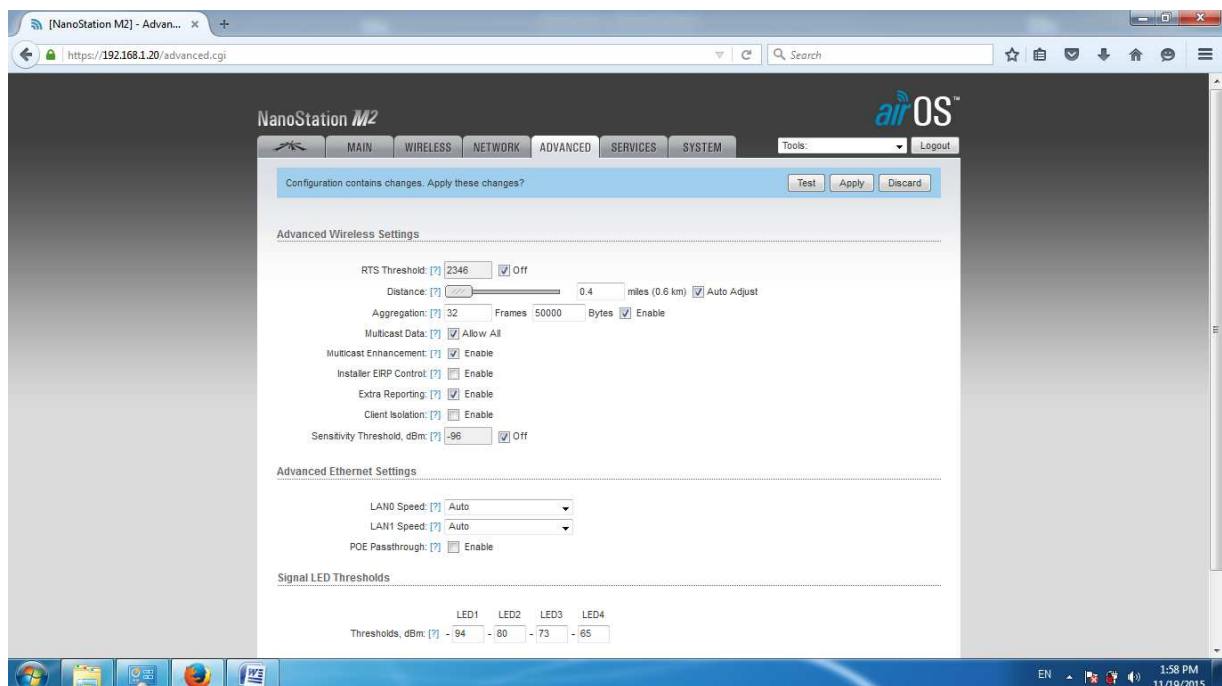
2. set wireless & change.



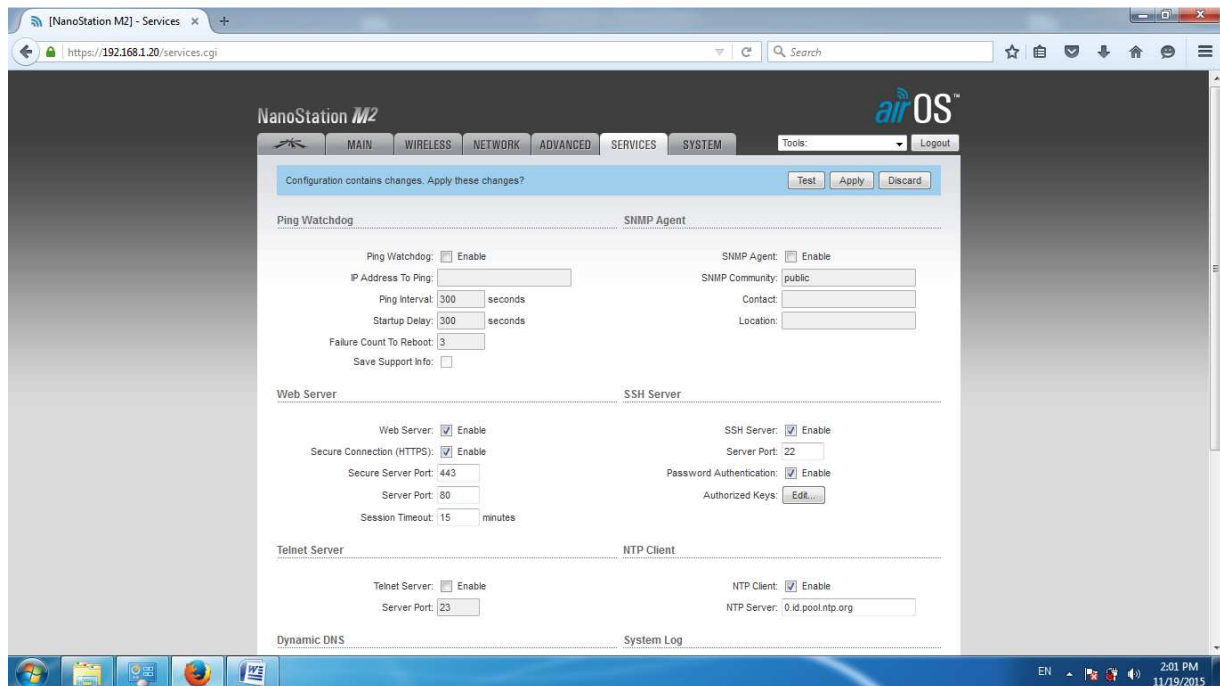
3. set network & change.



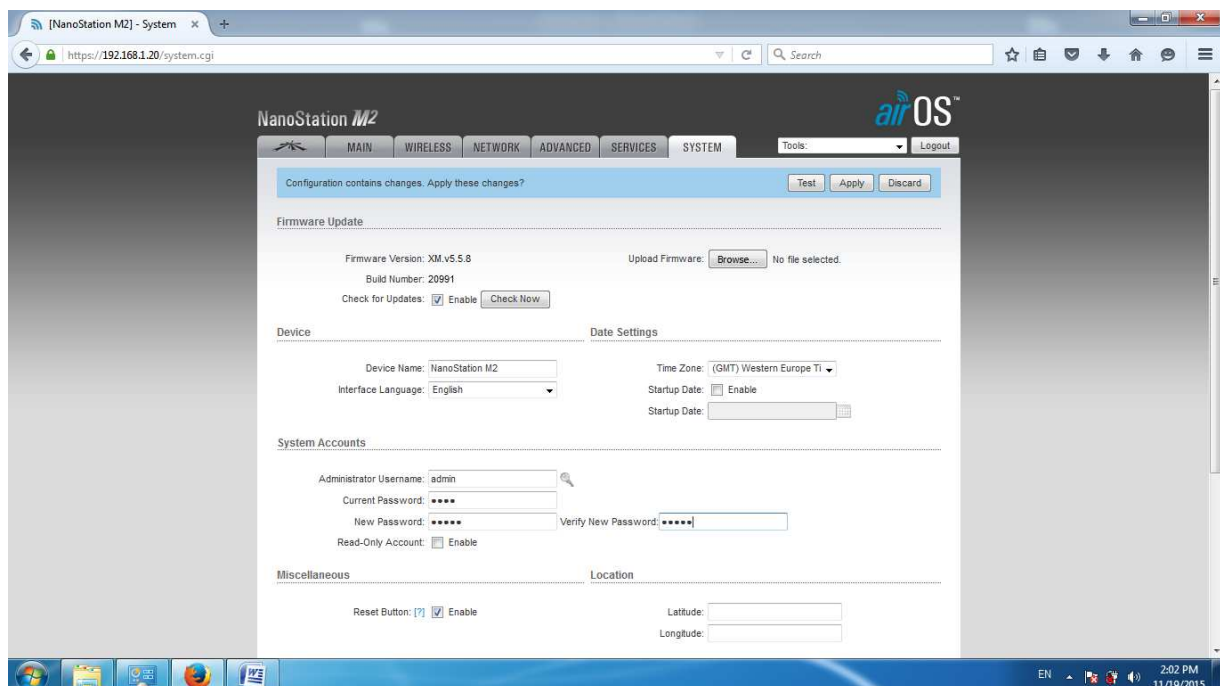
4. set advanced, config distance depend on your location, then change.



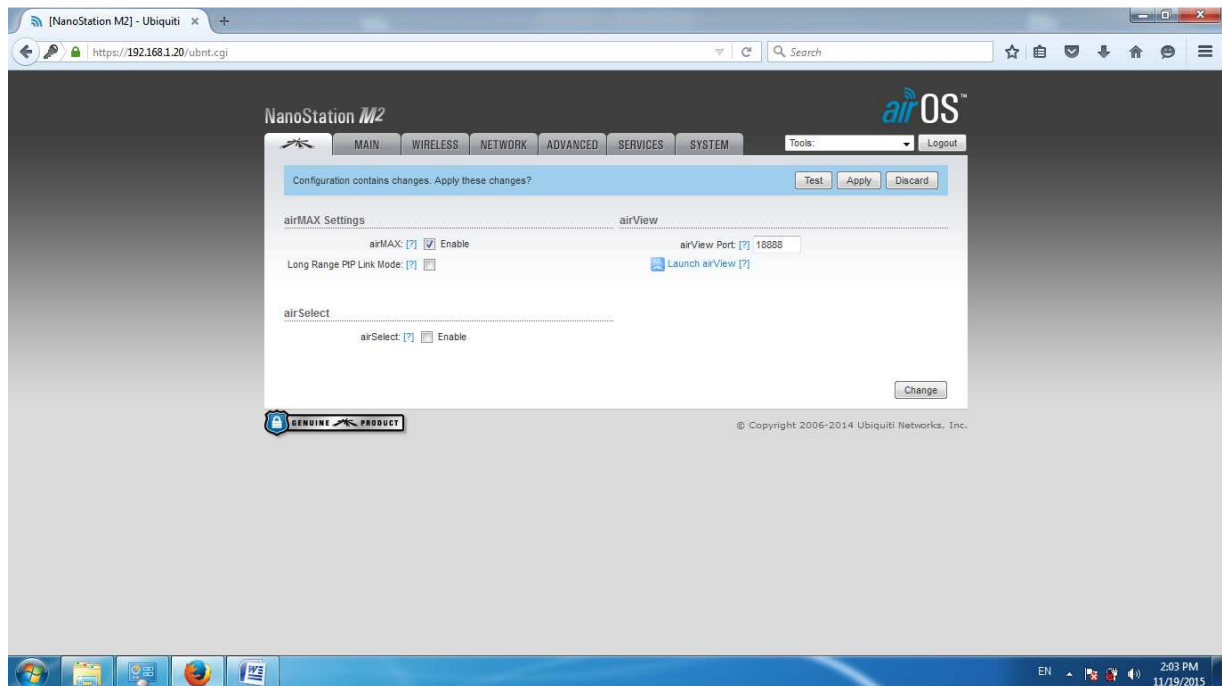
5. set services, enable NTP client & change.



6. set system, change default user & passwd, then change.

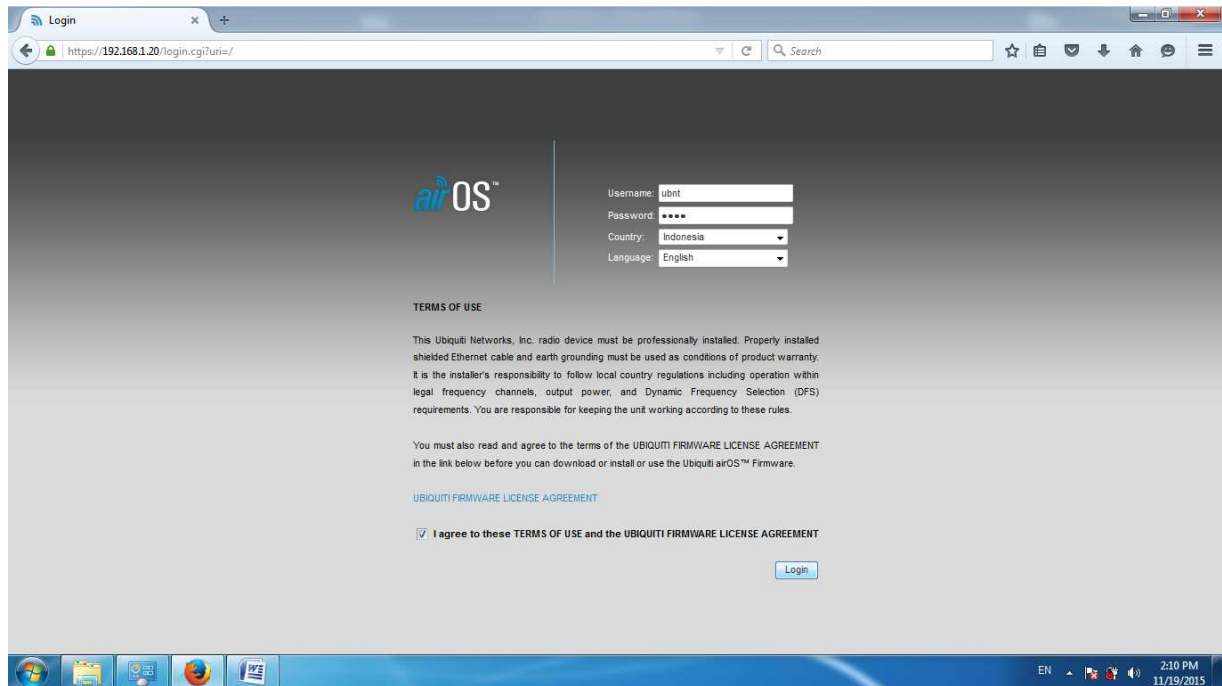


7. enable airMax & change, then apply all config.

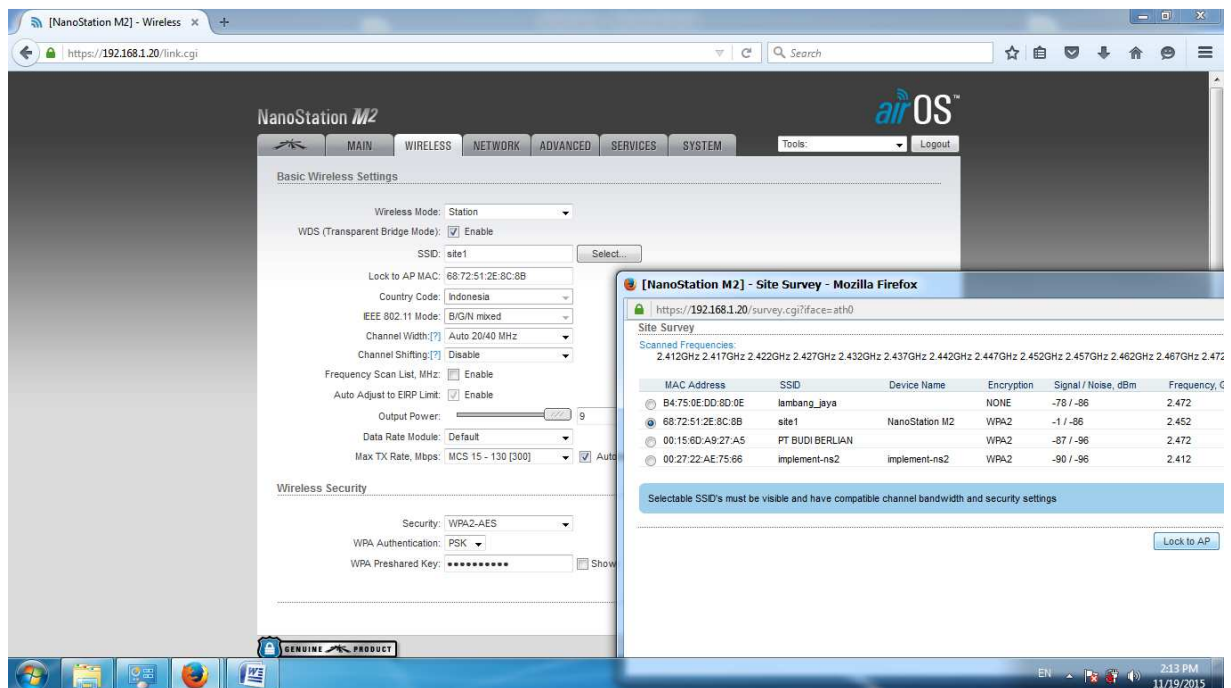


NanoStation M2 (2) as Station WDS

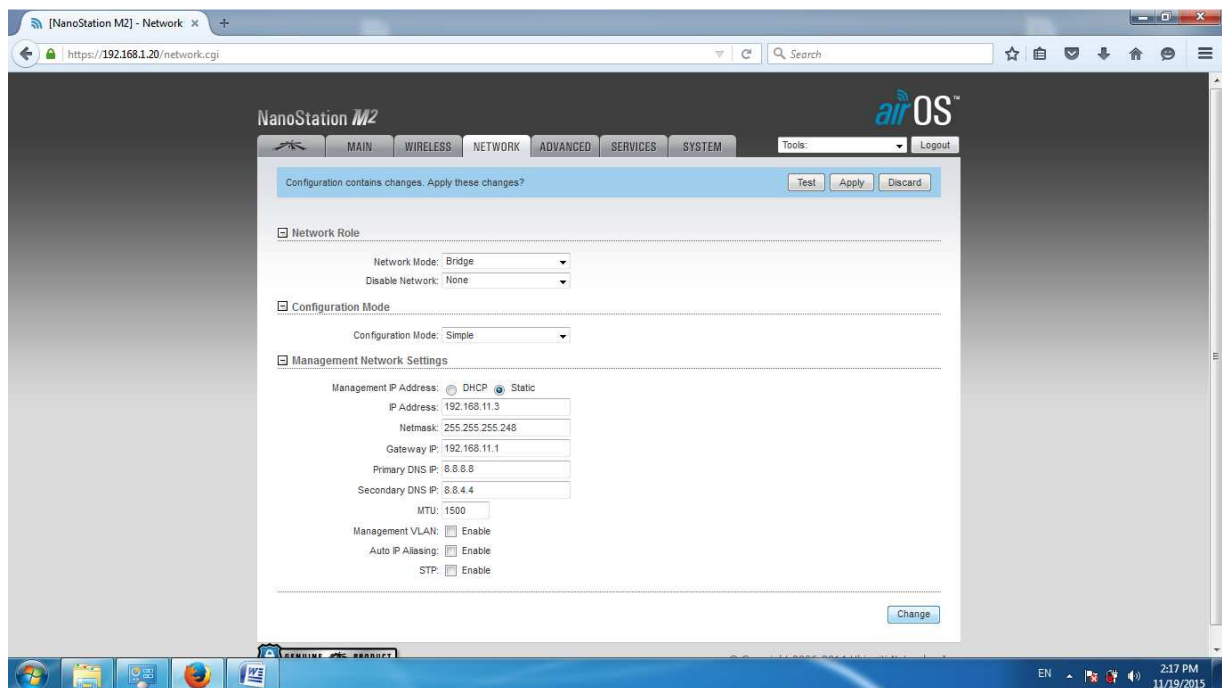
1. Default ip NS M2 192.168.1.20 with user & passwd ubnt.



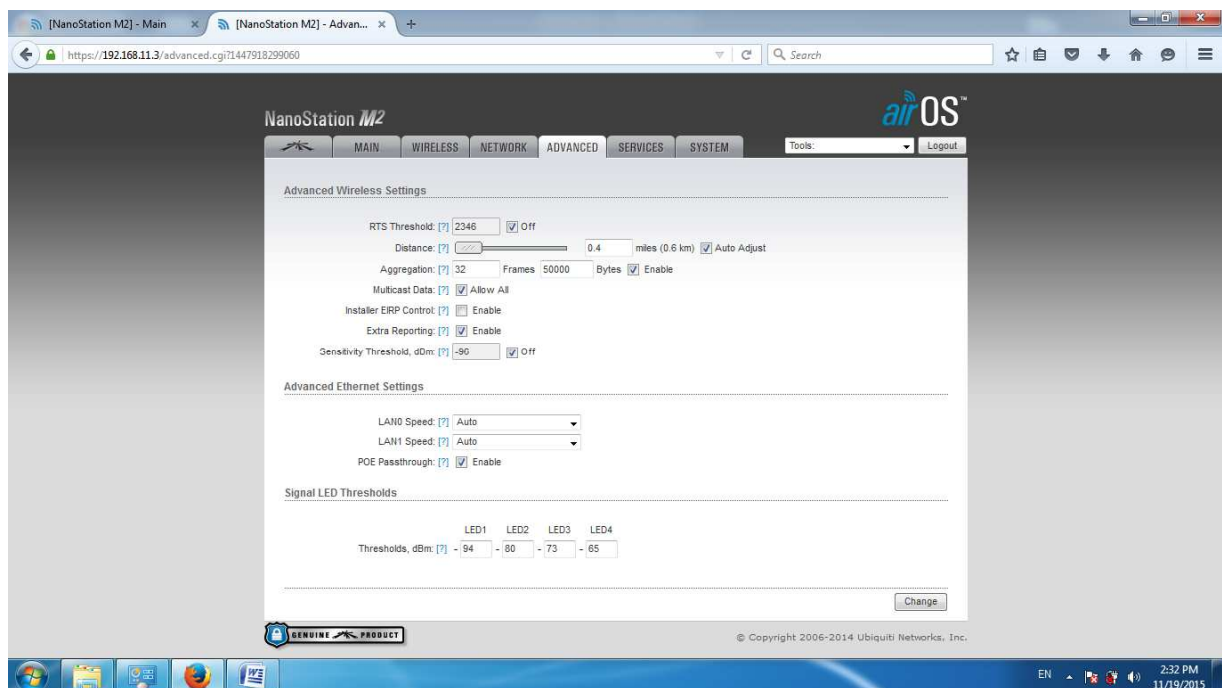
2. set wireless & change.



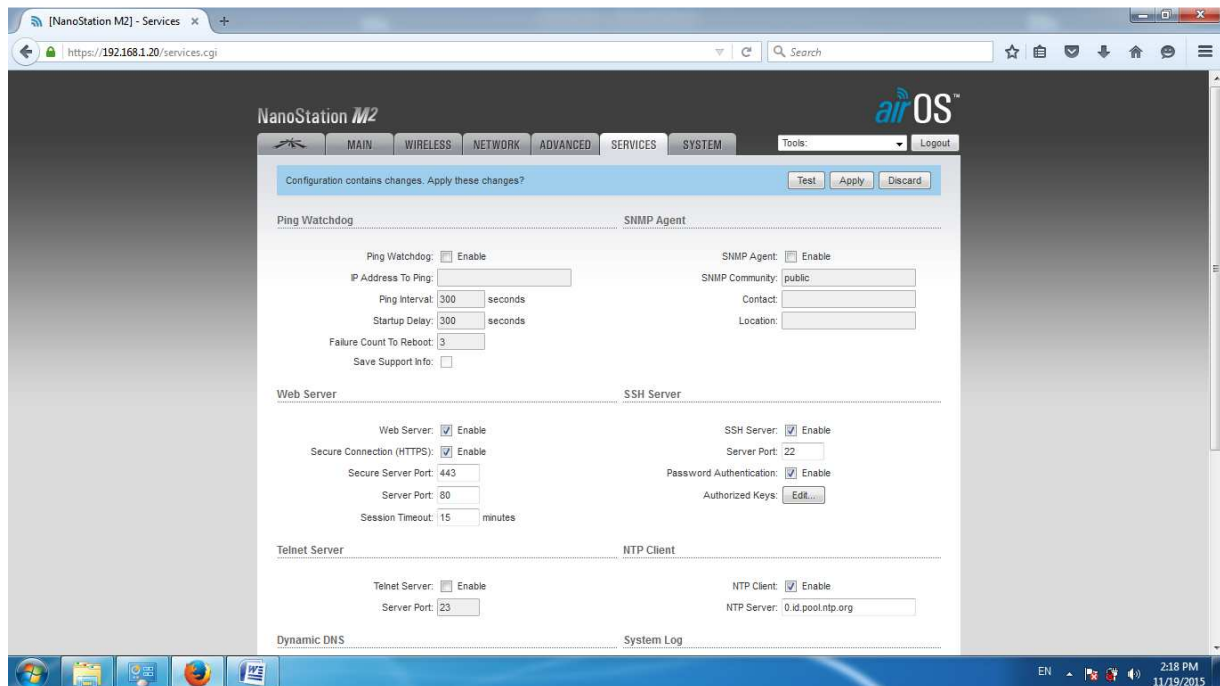
3. set network & change.



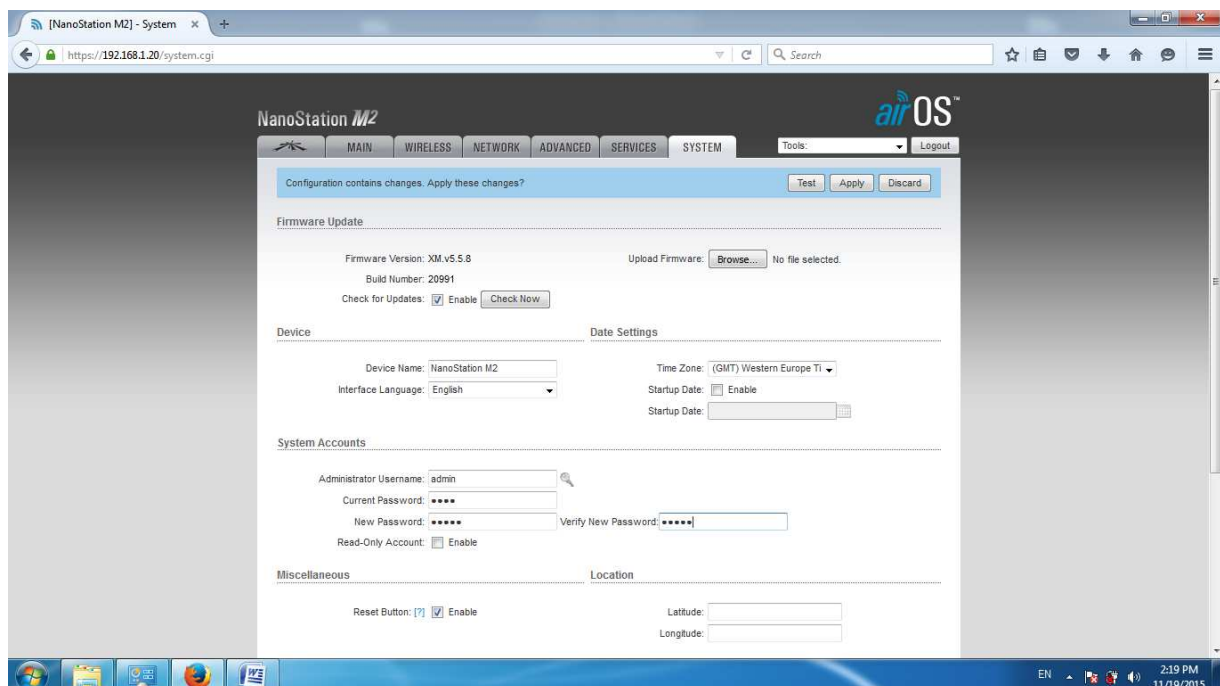
4. set advanced, enable POE passthrough. (give power to secondary port, used by picoStation M2HP)



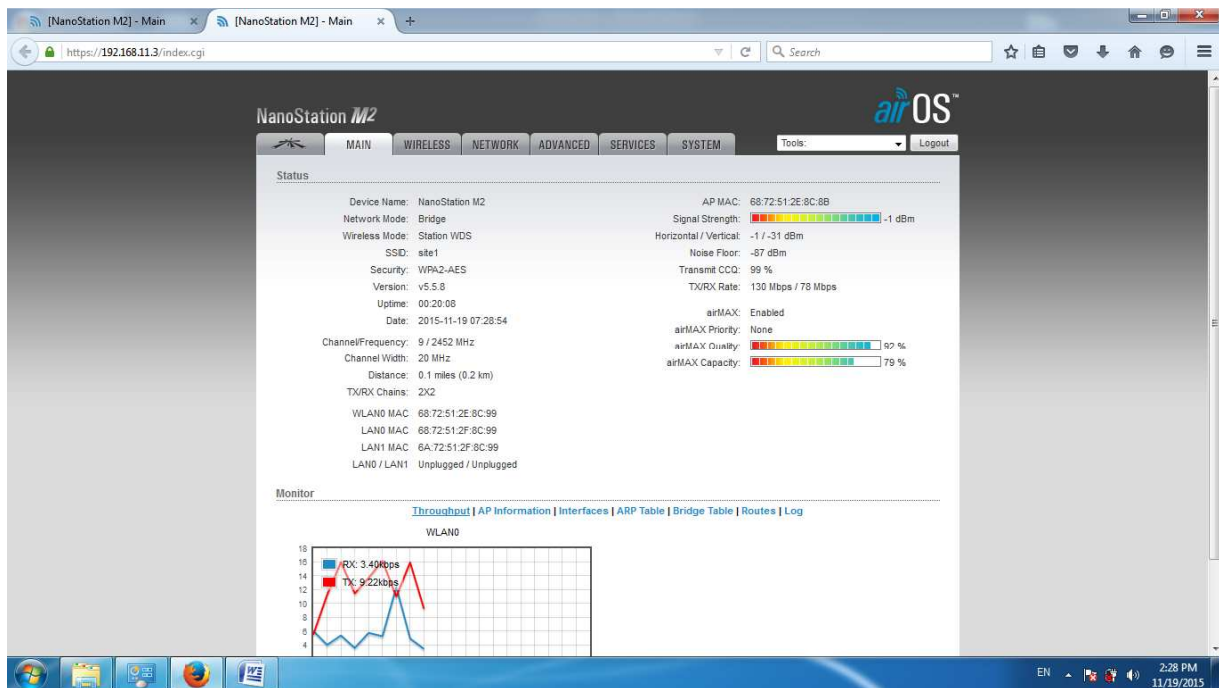
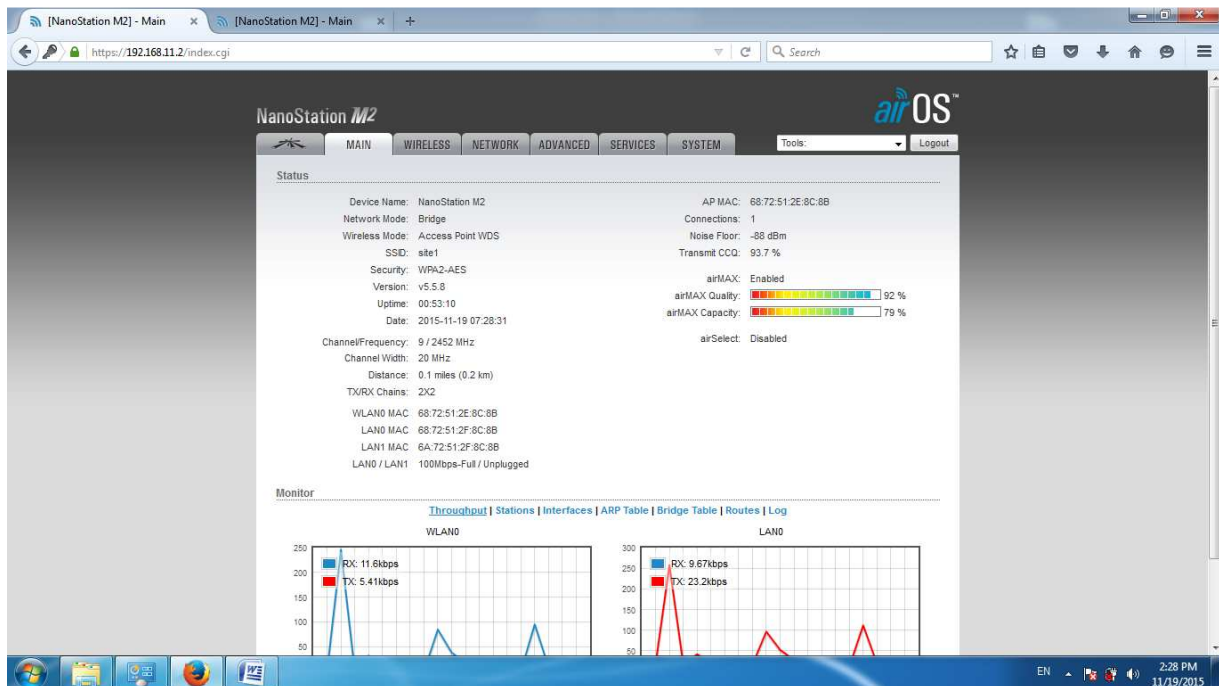
5. set services, enable NTP client & change.



6. set system, change default user & passwd then change & apply all config.

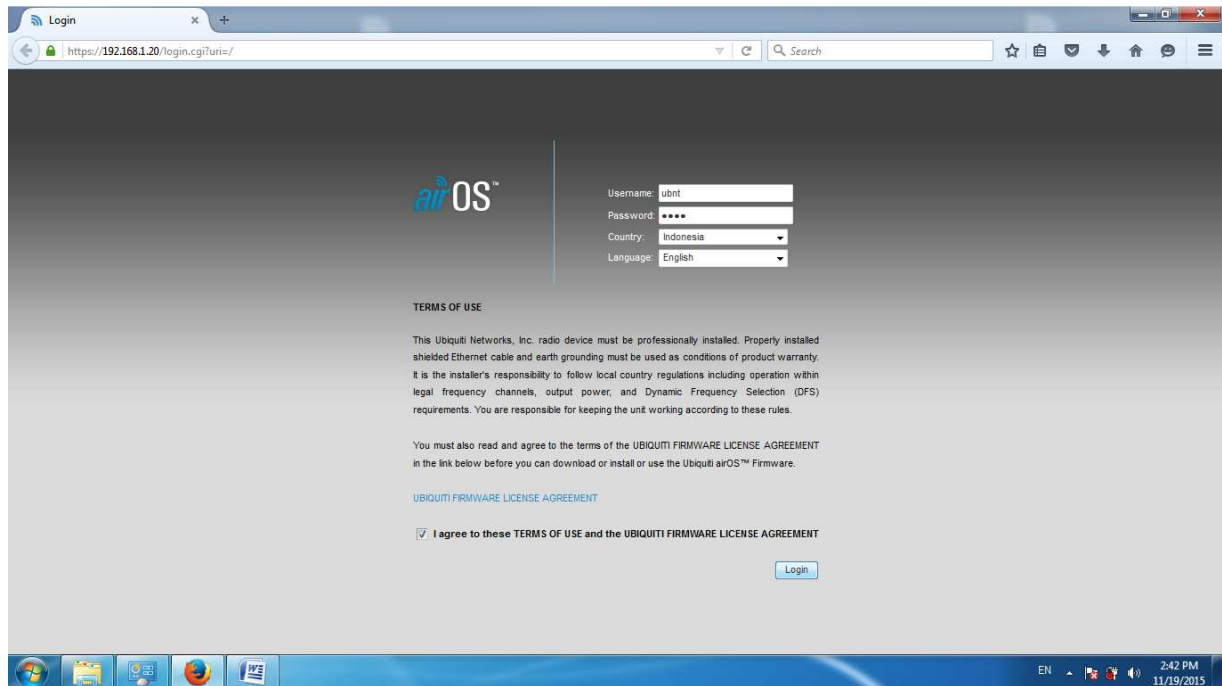


7. well done

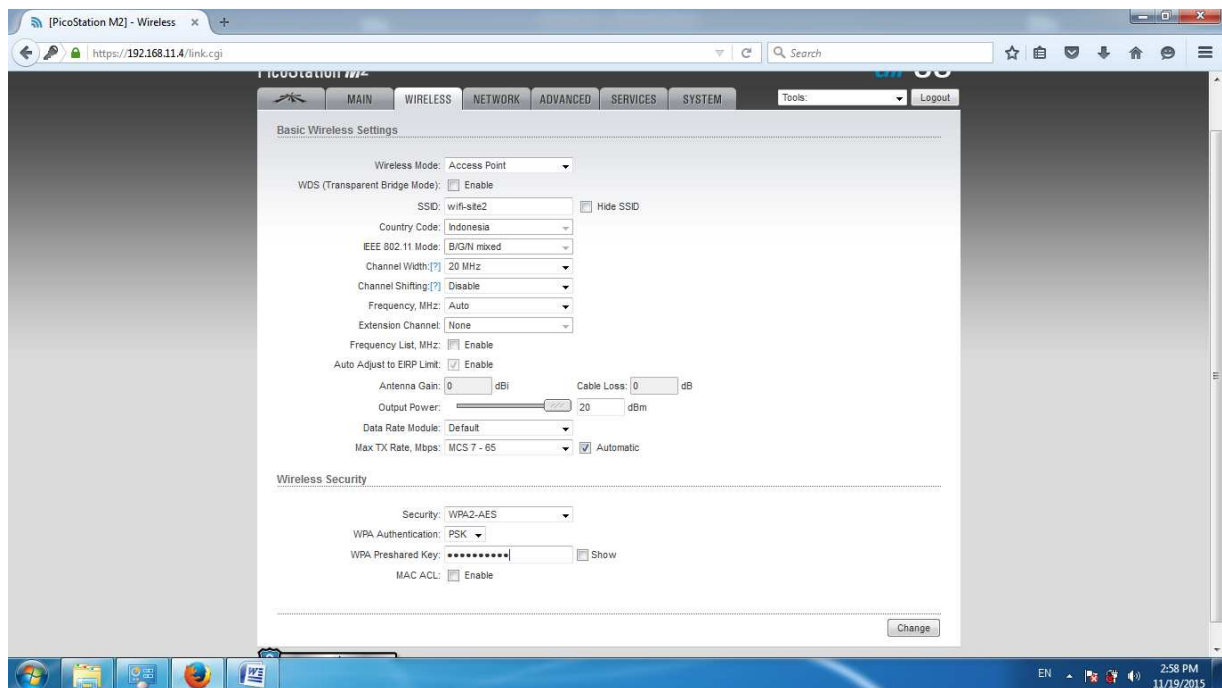


PicoStation M2HP as AP

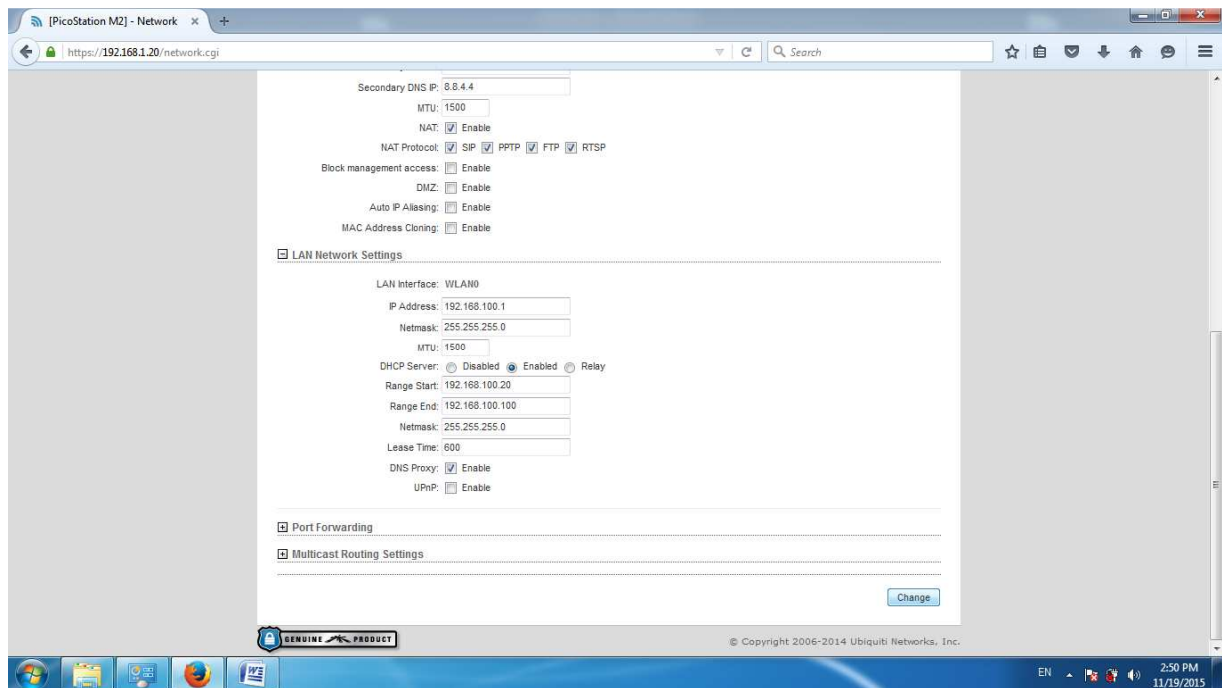
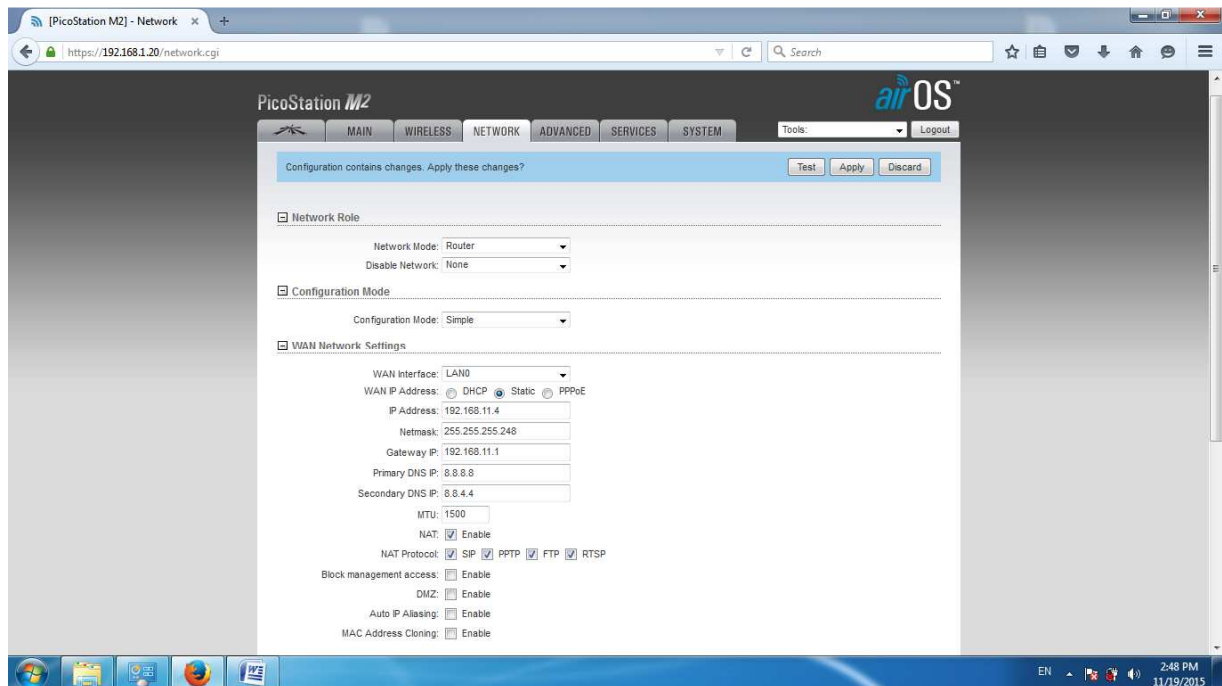
1. default ip PicoStation M2 is 192.168.1.20 with user & passwd ubnt.



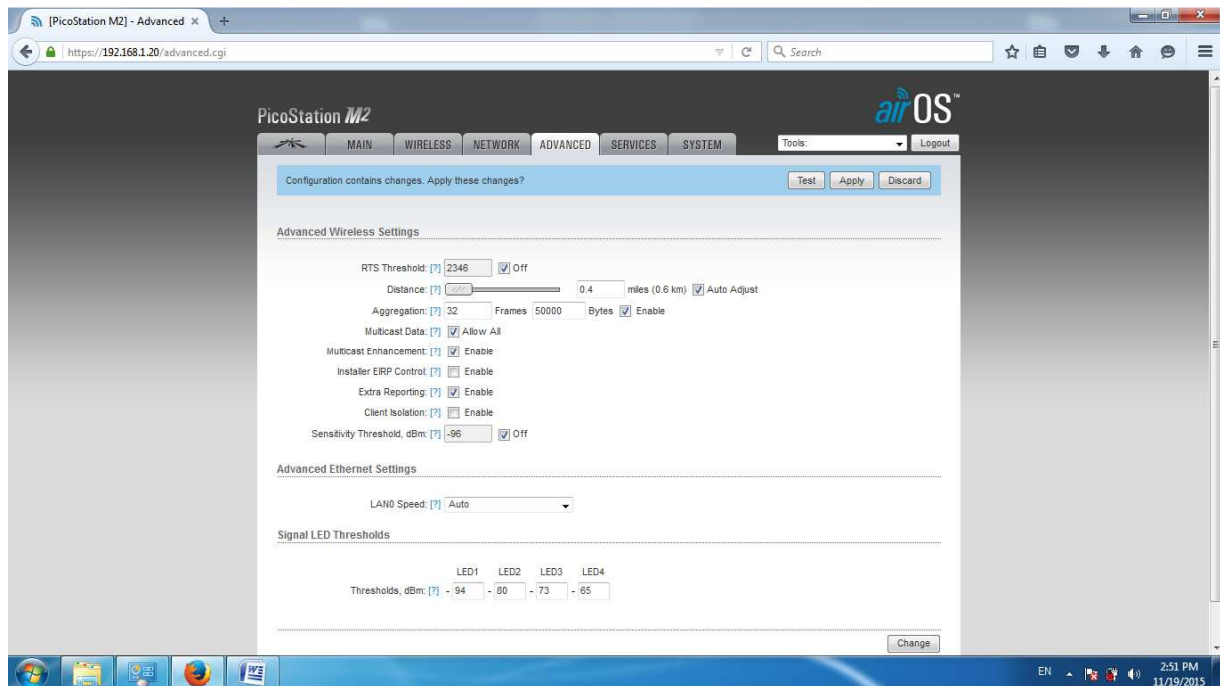
2. set wireless & change.



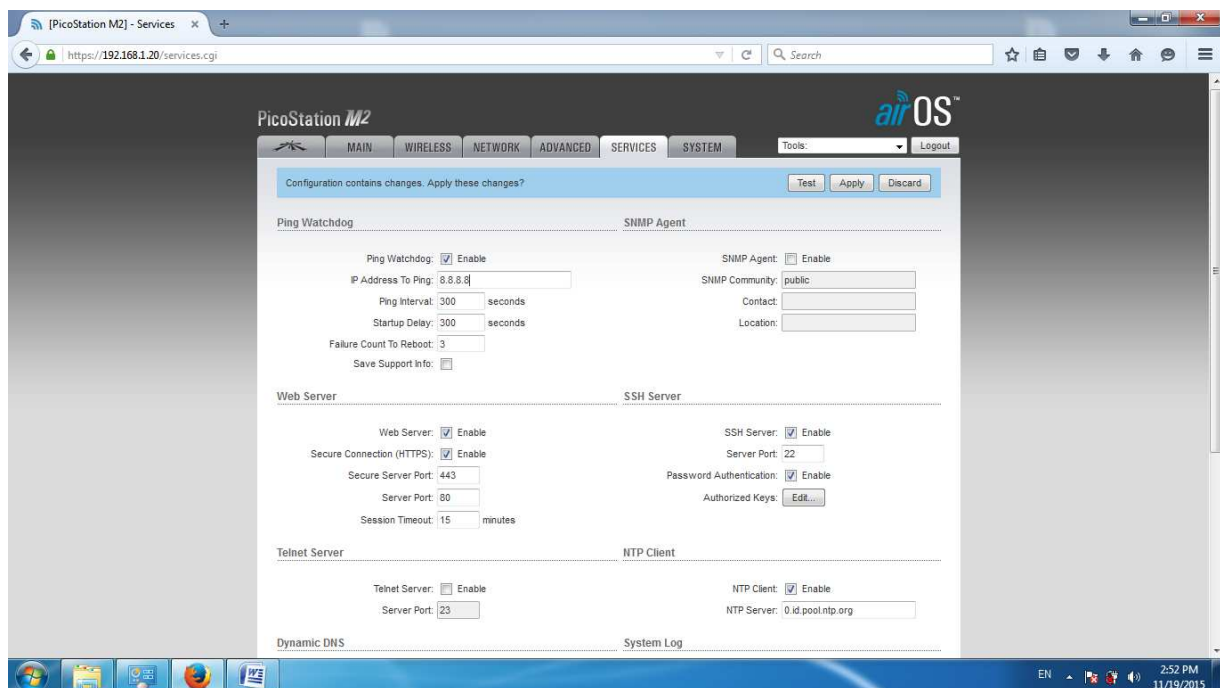
3. set network & change.



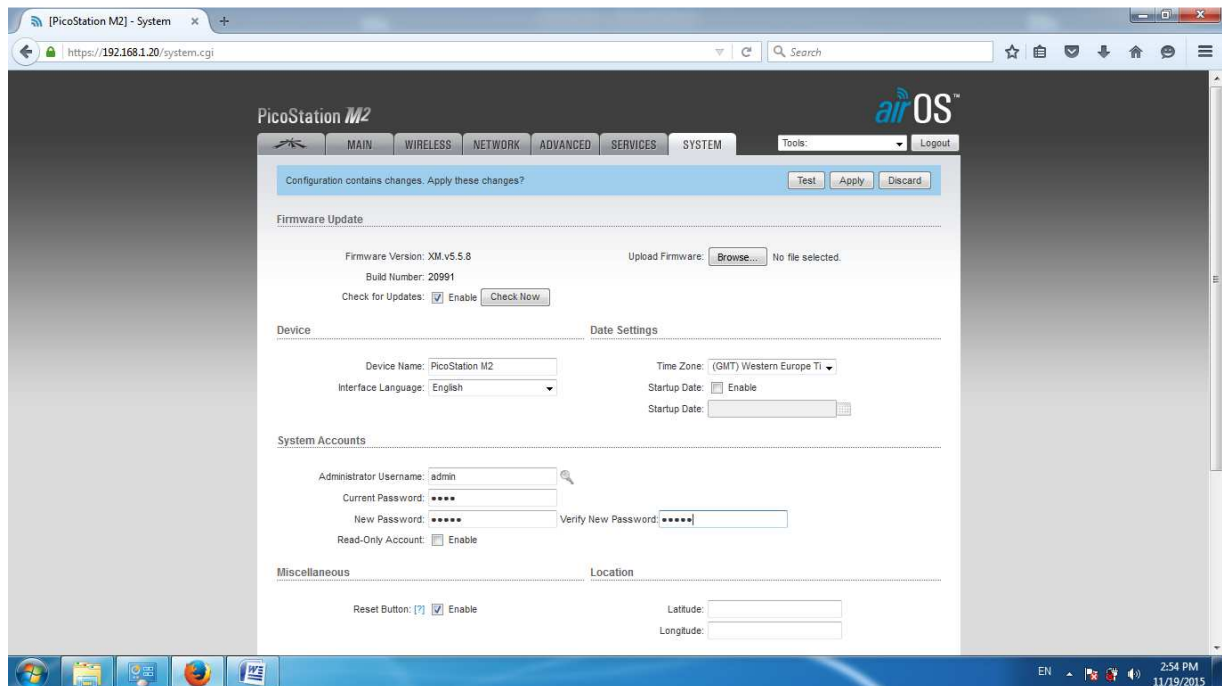
4. set advanced & change.



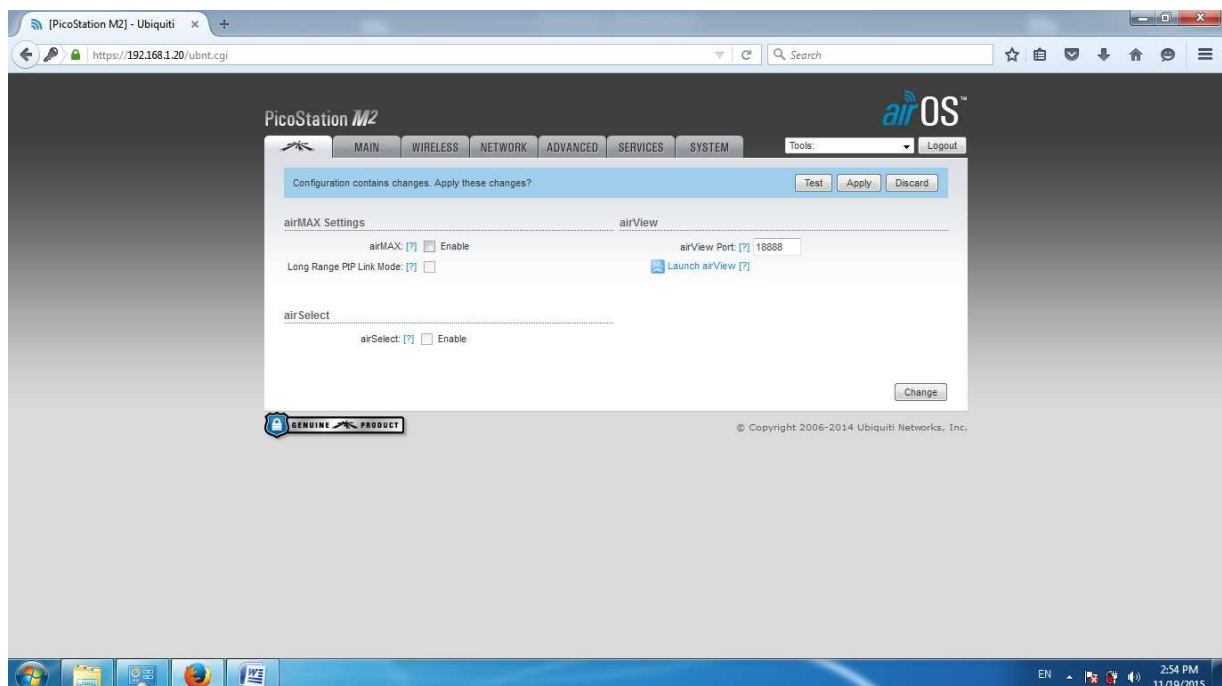
5. set services, enable NTP client.



6. set system, change default user & passwd.



7. disable airMax & change, then apply all config.



8. try connect to wifi.

The screenshot shows a web browser window with the address bar displaying "raisa.web.id". The page content includes a navigation bar with "HOME | SHARE | ABOUT | CONTACT", a "Welcome to My Documentations" heading, and a message in Indonesian: "Mohon maaf apabila ada kesalahan dalam penulisan serta penyampaian informasi. Kirimkan kritik dan saran yg membangun ke padli@raisa.web.id". Below this is a "Best Regards" signature for "Padli Yulian, S.Kom.". A copyright notice "Copyright © 2015 Padli Yulian." is at the bottom. On the right side, a Windows network status icon is visible, showing "Currently connected to: wifi-site2 Internet access" and a list of available wireless networks including "wifi-site2", "site1", "lambang_jaya", "PT BUDI BERLIAN", "freeBSD", and "SoftAP".

Below the browser window, the PicoStation M2 web interface is shown. The interface has a top navigation bar with tabs: MAIN, WIRELESS, NETWORK, ADVANCED, SERVICES, and SYSTEM. The "MAIN" tab is selected, displaying the "Status" section. The status information includes:

- Device Name: PicoStation M2
- Network Mode: Router
- Wireless Mode: Access Point
- SSID: wifi-site2
- Security: WPA2-AES
- Version: v5.5.8
- Uptime: 00:07:42
- Date: 2015-11-19 08:03:47
- Channel/Frequency: 5 / 2432 MHz
- Channel Width: 20 MHz
- Distance: 0.1 miles (0.2 km)
- TX/RX Chains: 1X1
- WLAN0 MAC: 68:72:51:26:BD:E5
- LAN0 MAC: 68:72:51:27:BD:E5
- LAN0: 100Mbps-Full
- AP MAC: 68:72:51:26:BD:E5
- Connections: 1
- Noise Floor: -88 dBm
- Transmit CQ: 93.3 %
- airMAX: Disabled

The "Monitor" section shows two graphs: "WLAN0" and "LAN0". The "WLAN0" graph shows RX: 9.70kbps and TX: 28.1kbps. The "LAN0" graph shows RX: 15.2kbps and TX: 5.46kbps.

Dok 20/11/2015 padliyulian@ymail.com